

# GUIDING OUR FUTURE: Engagement Materials & Handouts

This document includes copies of the materials shared during engagement.

## TABLE OF CONTENTS

ENGAGEMENT POSTERS ..... 2

WEBSITE .....6

FAQ DOCUMENT 1 .....9

FAQ DOCUMENT 2 .....11

SLIDE DECK (STAFF SESSIONS) ..... 16

INTERVIEW QUESTIONS (STUDENT CONVERSATIONS) ..... 21

SCENARIO WORKSHEETS ..... 22

BACKGROUNDER ..... 28

# Engagement Posters

## Staff Engagement

# GUIDING OUR FUTURE

LET'S DESIGN A STRONG LEARNING  
COMMUNITY - **TOGETHER**

**Join the Peace Wapiti Public School  
Division in exploring Junior High  
programming in Beaverlodge and Hythe.**

PWPSD is considering three options for how to configure junior high programming in the communities of Beaverlodge and Hythe and we need your input!

This is your opportunity as school staff to share your values, priorities, and suggestions for maintaining the vitality of our schools and meeting the evolving needs of students and community, both now and in the future.

## YOUR VOICE IS IMPORTANT. JOIN US.

### ATTEND A STAFF CONVERSATION

#### **Beaverlodge Elementary School**

Tuesday, Feb 14 | 3:45-5:15PM

#### **Hythe Regional School**

Wednesday, Feb 15 | 3:45-5:15PM

Contact us: [www.pwpsd.ca](http://www.pwpsd.ca) | [pwpsdengagement@pwpsd.ca](mailto:pwpsdengagement@pwpsd.ca)



**OUR CHILDREN, OUR FUTURE. LET'S MAKE DECISIONS TOGETHER.**



## Online Engagement

# GUIDING OUR FUTURE

LET'S DESIGN A STRONG LEARNING  
COMMUNITY - **TOGETHER**

**Join the Peace Wapiti Public School  
Division in exploring Junior High  
programming in Beaverlodge and Hythe.**

PWPSD is considering three options for how to configure junior high programming in the communities of Beaverlodge and Hythe and we need your input!

This is your opportunity to share your values, priorities, and suggestions for maintaining the vitality of our schools and meeting the evolving needs of students and community, both now and in the future.

## GET INVOLVED!

**PARTICIPATE ONLINE FROM JAN 24 – FEB 24, 2023** ✨



**ONLINE SURVEY**  
Share your opinion



**ALL OUR IDEAS TOOL**  
Brainstorm ideas with the community

*Important! This includes a never-ending stream of idea combinations. Please spend as much or as little time on this tool as you like.*

Contact us: [www.pwpsd.ca](http://www.pwpsd.ca) | [pwpsdengagement@pwpsd.ca](mailto:pwpsdengagement@pwpsd.ca)



**OUR CHILDREN, OUR FUTURE. LET'S MAKE DECISIONS TOGETHER.**



## Horse Lake Engagement

# GUIDING OUR FUTURE

LET'S DESIGN A STRONG LEARNING  
COMMUNITY - **TOGETHER**



**Join the Peace Wapiti Public School  
Division in exploring Junior High  
programming in Beaverlodge and Hythe.**

PWPSD is considering **three options** for how to configure junior high programming in the communities of Beaverlodge and Hythe and we need your input!

## WANT TO JOIN THE CONVERSATION? HERE'S HOW:

### FACE-TO-FACE

Attend a Community Conversation

### Horse Lake Arena

Thursday, Feb 16, 2023

Drop in anytime between 1:00-3:00PM

### ONLINE

Participate virtually in two ways from Jan 24 - Feb 24, 2023



**ONLINE SURVEY**  
Share your opinion



**ALL OUR IDEAS TOOL**  
Brainstorm ideas with the  
community

*Important!*  
This includes a never-ending  
stream of idea combinations.  
Please spend as much or as  
little time on this tool  
as you like.

For details on events visit our website at [www.pwpsd.ca](http://www.pwpsd.ca)

Questions? Contact us: [pwpsdengagement@pwpsd.ca](mailto:pwpsdengagement@pwpsd.ca)



**OUR CHILDREN, OUR FUTURE. LET'S MAKE DECISIONS TOGETHER.**

## All Engagement Opportunities

# GUIDING OUR FUTURE

LET'S DESIGN A STRONG LEARNING  
COMMUNITY - **TOGETHER**



**Join the Peace Wapiti Public School  
Division in exploring Junior High  
programming in Beaverlodge and Hythe.**

PWPSD is considering **three options** for how to configure junior high programming in the communities of Beaverlodge and Hythe and we need your input!

## WANT TO JOIN THE CONVERSATION? HERE'S HOW:

### FACE-TO-FACE

Attend a Community Conversation  
Register: [www.pwpsd.ca](http://www.pwpsd.ca)

**Beaverlodge Elementary School**  
Tuesday, Feb 14 | 6:30-8:00PM

**Hythe Regional School**  
Wednesday, Feb 15 | 6:30-8:00PM

**Horse Lake Arena\***  
Thursday, Feb 16 | 1:00-3:00PM  
*\*registration not required*

### ONLINE

Participate virtually in two ways  
from Jan 24 - Feb 24, 2023



**ONLINE SURVEY**  
Share your opinion



**ALL OUR IDEAS TOOL**  
Brainstorm ideas with the community  
*Important! This includes a never-ending stream of idea combinations. Please spend as much or as little time on this tool as you like.*

For details on events visit our website at [www.pwpsd.ca](http://www.pwpsd.ca)

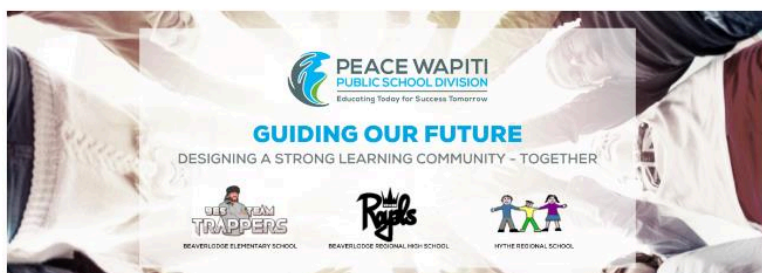
Questions? Contact us: [pwpsdengagement@pwpsd.ca](mailto:pwpsdengagement@pwpsd.ca)



**OUR CHILDREN, OUR FUTURE. LET'S MAKE DECISIONS TOGETHER.**

**Website:** <https://www.pwpsd.ca/>

## Guiding Our Future



*Thank you everyone who has joined the Guiding Our Future conversation. We are grateful for the high volume of information and feedback we have received and are now working hard to compile it all into a report for the Board. The final report will be shared on our website prior to the end of the 2022-2023 school year.*

### **Designing a strong learning community - together**

Exploring junior high programming in Beaverlodge and Hythe.

### **Why this, why now?**

Peace Wapiti Public School Division (PWPSD) serves many different students, families, and community members and is continually looking to improve and provide the best possible education experience. A student's school experience is impacted by many things including how school grades are arranged, how many students are found within each school, what programs are available, and how long they travel to and from school each day.

About PWPSD

Division Map

Kindergarten Info

List of PWPSD Schools

Harry Balfour  
Replacement School

Register Online

School Boundary Maps

Find your school on  
Facebook

School Contact  
Information

Guiding Our Future

All Our Ideas

In 2020, the PWPSD Board of Trustees received a request from the Beaverlodge Elementary School Council to create a junior high program (Grades 7-9) in the community of Beaverlodge. The addition of a junior high program in the community requires the Division to assess current programming in the following schools:

- [Beaverlodge Elementary School](#) (BES)
- [Beaverlodge Regional High School](#) (BRHS)
- [Hythe Regional School](#) (HRS)

**Guiding Our Future** is a project and conversation about working together to map out a sustainable path forward for junior high programming and ensure a positive experience. Any decision we make will have an impact on students, staff, and families. We need your voice as part of this conversation to ensure our Board of Trustees makes informed and thoughtful decisions.

This conversation launched on Tuesday, January 24 and concluded on Friday, February 24, 2023. All input and feedback will be collected, analyzed, and shared with Administration, the Board of Trustees, and all participants before the end of the 2022-2023 school year.

Any corresponding change in school offering requires review and approval by the Board of Trustees, and subsequent implementation. Depending on the magnitude or scale of the change this process may take significant time to complete.

### What might the schools in Beaverlodge and Hythe look like in the future?

This is our question for you. This is a question for all students, parents, staff, and community members who want to see opportunities and change that helps all students realize their full potential.

## GUIDING OUR FUTURE



### PARTICIPATION AT A GLANCE

**683**

Online Survey  
Responses

**450**

All Our Ideas  
submissions

**15,178**

All Our Ideas votes

**58**

Employee participants



**APPROX.  
200**

Community  
participants

**278**

Student participants





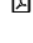
**Thank  
You!**

[WWW.PWPSD.CA](http://WWW.PWPSD.CA)  
Guiding Our Future

## Resources

PWPSD and Dialogue Partners engaged with parents and community members, staff, and students on this topic.

To support a constructive and effective discussion, we identified three possible approaches for you to review. Each approach has a variety of implications, opportunities and challenges. We asked you to consider each approach along with the pros, cons, and trade-offs for each possible path forward. **Each scenario has a more in-depth view that can be viewed by clicking the link provided below.**

-  [Guiding Our Future Back...](#)
-  [Frequently Asked Questio...](#)
-  [In-Person Engagement P...](#)
-  [Horse Lake Engagement...](#)
-  [Online Engagement Poster](#)

SCENARIO 1	SCENARIO 2	SCENARIO 3	SCENARIO 4
<b>Realignment: BES K-7 &amp; BRHS 8-12</b>	<b>Realignment: BES K-8 &amp; BRHS 9-12</b>	<b>Leave school configuration as it is</b>	<b>Open to alternatives</b>
<ul style="list-style-type: none"> <li>Add Beaverlodge Grade 7 students to BES</li> <li>Add Beaverlodge Grade 8 &amp; 9 students to BRHS</li> <li>HRS remains K-9</li> </ul>	<ul style="list-style-type: none"> <li>Add Beaverlodge Grade 7 &amp; 8 students to BES</li> <li>Add Beaverlodge Grade 9 students to BRHS</li> <li>HRS remains K-9</li> </ul>	No change to the current school configurations and/or possible teaching assignments.	Is there another way to think about the future? Are there ideas we haven't mentioned? Tell us what the future might look like to you by participating in any of the engagement opportunities listed below.
<a href="#">Additional Information</a>	<a href="#">Additional Information</a>	<a href="#">Additional Information</a>	-

#### Online:

- Participate in our online survey between January 24 and February 24, 2023. **The survey is now closed.**
- Brainstorm ideas with us online on All Our Ideas. As you head into this online conversation about junior high programming in Beaverlodge and Hythe, we invite you to practice care, kindness, and respect so that everyone has a safe and productive conversation. **This tool closed on Friday, February 3. For more information click [here](#).**

#### In-Person:

- In-person community conversations were held at:
  - Beaverlodge Elementary School** on Tuesday, February 14, 2023 from 6:30 p.m. to 8:00 p.m.
  - Hythe Regional School** on Wednesday, February 15, 2023 from 6:30 p.m. to 8:00 p.m.
  - Horse Lake First Nation Arena** on Thursday, February 16, 2023 from 1:00 p.m. to 3:00 p.m.

# FAQ Document 1



## FAQS

### **Why is the school board considering options for junior high programming?**

In 2020, the PWPSD Board of Trustees received a request from the Beaverlodge Elementary School Council to create a junior high program [Grades 7-9] in the community of Beaverlodge. The addition of a junior high program in this community will require the Division to assess the current grade configurations of Beaverlodge Elementary School (BES), Beaverlodge Regional High School (BRHS), and Hythe Regional School (HRS).

### **What may change, what will not change?**

What may change: Junior high school students residing in Beaverlodge could attend junior high school at either BES or BRHS depending on the scenario. Alternatives are presented for input.

What will not change: Students zoned for HRS will continue to attend junior high school in Hythe.

### **When will the decision on junior high programming be made?**

Following Phase 3 of the public engagement in February, public feedback will be used to determine a preferred option for junior high programming in the area. We will share what we heard during engagement and the results later by the end of the 2022-23 school year.

Later this spring, we will share what we heard during engagement with the Board of Trustees, who will then determine the best path forward for the Division. Any recommended changes would then be integrated into an implementation timeline at that point. No changes will be made to school programming until sufficient planning has been undertaken to ensure the best results for students, teaching staff and families.

### **Will adjustments to the proposed options be considered?**

The Board of Trustees values the perspectives of families, students and teaching staff throughout the Division and is committed to reviewing all feedback received during engagement and considering it during their decision on how best to configure junior high programming in the area.

### **Will there be another opportunity to give feedback and if so, when?**

As with any decision the Board of Trustees makes, there are multiple ways for parents and community members to provide feedback. We invite you to attend a School Council Meeting, formally request to present to the Board during a public board meeting (see [Policy BDDH – Public Participation at Board Meetings](#) for guidelines and procedures), or contact your school trustee directly to share any additional feedback that you might have.

### **What will be the impact to staff with all the grade configuration changes?**

Any proposed changes to the current school configurations will result in some staffing changes that reflect student numbers at each school. No changes will be made to school programming until sufficient planning has been undertaken to ensure the best results for students, teaching staff and families.

### **How might this impact the bussing schedule?**



The impact on bussing schedules will depend on the final option that is selected for implementation. If changes are made, bus pickup and drop off times in the Beaverlodge attendance area may be reduced.

**If a change is approved by the Board, when may it be implemented?**

Once all engagement opportunities have been completed, we will share what we heard with the Board of Trustees, who will then determine the best path forward for the Division. Any recommended changes would then be integrated into an implementation timeline to support the change process. No changes will be made to school programming until sufficient planning has been undertaken to ensure the best results for students, teaching staff and families.

# FAQ Document 2



## FAQS

### **Why is the school board considering options for junior high programming?**

In 2020, the PWPSD Board of Trustees received a request from the Beaverlodge Elementary School Council to create a junior high program [Grades 7-9] in the community of Beaverlodge. As this was not the first time this request was made, the Board felt it was time to collect input regarding junior high programming in Beaverlodge. The possible addition of a junior high program in this community requires the Division to assess the current grade configurations of Beaverlodge Elementary School (BES), Beaverlodge Regional High School (BRHS), and Hythe Regional School (HRS).

### **What may change, what will not change?**

What may change: Junior high school students residing in Beaverlodge could attend junior high school at either BES or BRHS depending on the scenario. Alternatives are presented for input.

What will not change: Students zoned for HRS will continue to attend junior high school in Hythe.

### **When will the decision on junior high programming be made?**

Following Phase 3 of the public engagement in February, public feedback will be used to determine a preferred option for junior high programming in the area. We will share what we heard during engagement and the results later by the end of the 2022-23 school year.

Later this spring, we will share what we heard during engagement with the Board of Trustees, who will then determine the best path forward for the Division. Any recommended changes would then be integrated into an implementation timeline at that point. No changes will be made to school programming until sufficient planning has been undertaken to ensure the best results for students, teaching staff and families.

### **Will adjustments to the proposed options be considered?**

The Board of Trustees values the perspectives of families, students and teaching staff throughout the Division and is committed to reviewing all feedback received during engagement and considering it during their decision on how best to configure junior high programming in the area.

### **Will there be another opportunity to give feedback and if so, when?**

As with any decision the Board of Trustees makes, there are multiple ways for parents and community members to provide feedback. We invite you to attend a School Council Meeting, formally request to present to the Board during a public board meeting (see [Policy BDDH – Public Participation at Board Meetings](#) for guidelines and procedures), or contact your school trustee directly to share any additional feedback that you might have.

### **What will be the impact to staff with all the grade configuration changes?**

Any proposed changes to the current school configurations will result in some staffing changes that reflect student numbers at each school. No changes will be made to school programming until sufficient planning has been undertaken to ensure the best results for students, teaching staff and families.

### **How might this impact the busing schedule?**

BES would transition to no longer having a Compressed School Week (CSW) schedule. The impact on busing schedules will depend on the final option that is selected for implementation. If changes are made, bus pickup and drop off times in the Beaverlodge attendance area may be reduced.

Currently, all nine buses heading into Beaverlodge first stop at St. Mary's Catholic School before stopping at BES and then at BRHS where the junior high students transfer onto HRS. If changes were made, there would be no additional bus traffic at the schools.

#### *Elementary*

BES would eventually cease to be a CSW school. The school day could be shortened by approximately 10 minutes for all elementary and Beaverlodge junior high students. (This is in addition to the bus times.)

There would be no increase in bus traffic at BES; in fact, it would decrease as HRS junior high transfer buses would eventually no longer be necessary.

#### *Junior High*

Students heading to HRS spend an additional 40 minutes per day transferring back and forth. This is in addition to their early bus times that are adjusted to make the transfer bus.

#### *Senior High*

Students at BRHS arrive at the school at 8:32 a.m., while the first bell rings at 8:55 a.m., and the first class begins at 8:59 a.m. In the afternoon, dismissal is at 3:16 p.m., yet departure is not until 3:44 p.m., as buses must wait for the transfer buses from Hythe to arrive. This would not occur if Beaverlodge students stayed within the community.

Transfer times for students transferring into Beaverlodge for high school would not be affected, as these students cannot get to Beaverlodge any earlier than the current 8:45 a.m.

#### *Financial*

Under the current grant structures, PWPSD's Transportation department would lose money, approximately \$121,500 annually. The Division estimates the cost of the transfer and mileage for the three buses going back and forth between Beaverlodge and Hythe to be approximately \$15,500 annually.

The transportation grant would see the largest decrease, approximately \$137,000. The Division estimates it would lose approximately \$500 per rural junior high student.

Current numbers: 107 rural junior high students x \$500 = \$53,500

+ 44 town of Beaverlodge junior high students x \$1,900 = \$83,600

= \$137,100

### **If a change is approved by the Board, when may it be implemented?**

Once all engagement opportunities have been completed, we will share what we heard with the Board of Trustees, who will then determine the best path forward for the Division. Any recommended changes would then be integrated into an implementation timeline to support the change process. No

changes will be made to school programming until sufficient planning has been undertaken to ensure the best results for students, teaching staff and families.

**How does the attendance of Beaverlodge students enhance the educational experience for all students at Hythe Regional School?**

It allows for broader programming, and builds relationships, connections and empathy between students. The larger student numbers offer opportunities for stronger sports teams and extra-curricular activities.

**If Beaverlodge students stopped attending Hythe Regional School, how might that negatively impact the programming, culture and climate?**

The smaller junior high student numbers would limit programming for students at every location. The expertise of specialized teachers would be lost. Students and staff might feel more isolated, and the students would miss out on building more relationships. Sports teams would also be more challenging to operate due to difficulty finding coaches/supervisors.

**If Grade 7 & 8 Beaverlodge students were added to Beaverlodge Elementary School, what impact would this have on all student programming?**

Space would be an issue. Ideally, it would require four classrooms. PE and Fine Arts would be impacted. Art and Fine Arts rooms would most likely be used for junior high classrooms.

**How might the addition of Grade 7 & 8 Beaverlodge students negatively impact the culture and climate of Beaverlodge Elementary School?**

While BES could handle the increased student numbers, it may create some strain on certain areas of the school such as the gymnasium and bathrooms. PE classes would have less space and half the gym would be used most of the time. There wouldn't be a lot of outdoor space for the students. There could be an increase in parent vehicle traffic at the school. The addition of junior high would add a student dynamic that the school has not seen, but it would be a natural transition as they are Beaverlodge students.

**How might the addition of Grade 7 & 8 Beaverlodge students positively impact the culture and climate of Beaverlodge Elementary School?**

There could be added sports programs and school spirit within the community. It could see additional parent support, which would help school morale. It would allow the students to be better connected within the community; with senior citizens through the school's community connections program, and with the students and staff at BRHS, which would help students when they transition to the high school. It would also shorten the school day for students.

**If junior high was added to Beaverlodge Regional High School, how would the school facilitate this? How would physical space be reorganized? What impact might this have on student programming?**

Grade 9 students would have a semester system, which would allow more cross over staff for specialized teaching; this would help utilize space more efficiently. Gym use would be more difficult, and access to other Career and Technology Foundations (CTF) programming would need to be reviewed. Changes to CTF programming could lead to changes for programming at feeder schools. It may help with Beaverlodge student transitions to high school. PATs would be added to the schedule, which are not seen as a negative, but an adjustment.

**How might the addition of junior high negatively impact the culture and climate of Beaverlodge Regional High School?**

The level of maturity of senior high students could be an issue with junior high students in the building. High school students would have to get used to this change and to engaging properly with younger students. This will be a growing need. BRHS Admin does not see significant negative impacts with adding junior high students.

**How might the addition of junior high positively impact the culture and climate of Beaverlodge Regional High School?**

It would add depth to the building. It would give a better understanding of the move from junior to senior high, which could lead to better transitions. Junior high students would bring more energy and enthusiasm to the building. Adding junior high would allow for better relationships and better high school programming earlier. It may reduce parent stress around the junior to senior high school transition. There would be no more Compressed School Weeks for Beaverlodge students, which could improve attendance at BRHS.

**Additional Considerations**

- Research points to less school transitions for students having a positive impact on student graduation rates and achievement.
- Beaverlodge junior high students may find participating in extra-curricular easier without transportation challenges that arise with after school pick-up in Hythe.

## Slide Deck: Staff Sessions



# GUIDING OUR FUTURE

*Together we can design a strong learning community.*

FEBRUARY 2023



### DISCUSSION

What are your **hopes** and **expectations** for this conversation about junior high programming?

1

# SCENARIO A

REALIGNMENT: BES K-7 AND BRHS 8-12E

## REALIGNMENT: BES K-7 AND BRHS 8-12

This approach would involve:

- Adding Beaverlodge Grade 7 students to BES
- Adding Beaverlodge Grade 8 and 9 students to BRHS
- HRS would remain K-9

What would change with this approach?

- BES becomes K-7
- BRHS becomes 8-12, with Beaverlodge Grades 8 and 9 zoned to attend BRHS instead of HRS.

What would stay the same with this approach?

- HRS remains K-9

dialoguepartners.ca 3

## REALIGNMENT: BES K-7 AND BRHS 8-12

### Considerations & Trade-Offs

- Some parents may not like Grade 8 students attending BRHS.
- This option allows for growth in the community of Beaverlodge at both school sites
- May lead to declining student numbers at HRS and fewer program options for students at both BES and HRS

### Projected Enrollment & Utilization

- Adding Grade 7 to Beaverlodge Elementary School would create a projected enrollment of 284 students with 67% utilization.
- Adding Beaverlodge Grade 8 and 9 students to BRHS would create a projected enrollment of 427 with 74% utilization.
- Beaverlodge junior high students remaining in Beaverlodge would create a projected enrollment of 258.5 students and 43% utilization at HRS.

dialoguepartners.ca 4



## DISCUSSION

What are the **benefits** of this scenario?

What are the **drawbacks** of this scenario?

IF the school district were to move forward with this scenario, **what would you like them to consider?**

---

5

## SCENARIO B

---

REALIGNMENT: BES K-8 AND BRHS 9-12, HRS REMAINS K-9

### REALIGNMENT: BES K-8 AND BRHS 9-12, HRS REMAINS K-9

This approach would involve:

- Adding Beaverlodge Grade 7 and 8 students to BES
- Adding Beaverlodge Grade 9 students to BRHS
- HRS would remain K-9

What would change with this approach?

- BES becomes K-8
- BRHS becomes 9-12, with Beaverlodge Grade 9s zoned to attend BRHS instead of HRS.

What would stay the same with this approach?

- HRS remains K-9
- 

7

## REALIGNMENT: BES K-8 AND BRHS 9-12, HRS REMAINS K-9

### Considerations & Trade-Offs

- BES utilization may leave considerably less room for growth in the long term.
- This option would alleviate parent concerns for Grade 8 students attending BRHS.
- Would be an optimal choice if the Board was considering a K-8 replacement school in Beaverlodge; however, it may be several years before such a request would be approved. This would, however, allow for additional or replacement modular requests dependent on growth.
- May lead to declining student numbers at HRS and fewer program options for students at both BES and HRS

### Projected Enrollment & Utilization

- Adding Grades 7 and 8 to BES would create a projected enrollment of 324 students with 76% utilization.
- Adding Beaverlodge Grade 9 students to BRHS would create a projected enrollment of 387 with 68% utilization.
- Beaverlodge junior high students remaining in Beaverlodge would create a projected enrollment of 258.5 students and 43% utilization at HRS.

8



## DISCUSSION

What are the **benefits** of this scenario?

What are the **drawbacks** of this scenario?

IF the school district were to move forward with this scenario, **what would you like them to consider?**

9

## SCENARIO C

LEAVE SCHOOL CONFIGURATION AS IS

## LEAVE SCHOOL CONFIGURATION AS IS

This approach would involve:

- No changes to school configurations or possible teaching assignments.

### Considerations & Trade-Offs

- No changes in transportation grants.
- Continued student enrollment declines in Beaverlodge remain a possibility.
- Teaching staff at BES has been reduced from 19 full-time positions in 2018 to 15.55 in 2021 (a reduction of 3.45). This has led to some combined classes in elementary in non-core classes.

11



## DISCUSSION

What are the **benefits** of this scenario?

What are the **drawbacks** of this scenario?

IF the school district were to move forward with this scenario, **what would you like them to consider?**

12

## THANK YOU!

We will share a summary of what we heard during community engagement on our website in Spring 2023 at [www.pwpsd.ca](http://www.pwpsd.ca)

You can share additional comments via email to [pwpsdengagement@pwpsd.ca](mailto:pwpsdengagement@pwpsd.ca)

**Together we can design a strong learning community!**

13

# Interview Questions – Student Conversations

## Beaverlodge Elementary School

1. What do you enjoy about attending Beaverlodge Elementary School?
2. What are you most excited about in attending junior high at Hythe Regional School?
3. Do you have any concerns or worries about attending Hythe Regional School for junior high?
4. What is your current grade

## Hythe Regional Elementary School

1. What do you enjoy about attending Hythe Regional School
2. What are you most excited about in attending junior high at Hythe Regional School?
3. What are your feelings about attending Hythe Regional School for junior high?
4. What is your current grade
5. What are your feelings about attending Hythe Regional School for junior high?

## Hythe Regional Junior High

1. What do you enjoy about attending Hythe Regional School?
2. If a change was made to junior high programming what would that mean to you as a student?
3. If things stayed the same at Hythe Regional School, what would that mean to you as a student?
4. What is your current grade

## Beaverlodge Regional High School

Presented with Scenario 3: Leave school configuration as is

1. What are the benefits of this scenario?
2. What are the drawbacks of this scenario?
3. IF the school district were to move forward with this scenario, what would you like them to consider?

# Scenario Worksheets

## Guiding our Future

Designing a strong learning community - together

### Realignment: BES K-7 and BRHS 8-12

Add Beaverlodge Grade 7 students to BES  
Add Beaverlodge Grade 8 and 9 students to BRHS  
HRS remains K-9

#### What would change with this approach?

BES becomes K-7  
BRHS becomes 8-12, with  
Beaverlodge grades 8 and 9 zoned  
to attend BRHS instead of HRS.

#### What would stay the same with this approach?

HRS remains K-9

#### Considerations and Trade-Offs

- Some parents may not like Grade 8 students attending BRHS.
- This option allows for growth in the community of Beaverlodge at both school sites.
- This option may lead to declining student numbers at HRS and fewer program options for students at both BES and HRS.

#### Projected Enrollment and Utilization under this scenario

- Adding Grade 7 to BES would create a projected enrollment of 284 students with 67% utilization.
- Adding Beaverlodge Grade 8 and 9 students to BRHS would create a projected enrollment of 427 with 74% utilization.
- Beaverlodge junior high students remaining in Beaverlodge would create a projected enrollment of 258.5 students and 43% utilization at HRS.

[www.pwpsd.ca](http://www.pwpsd.ca)



#### What are the benefits of this scenario?

---

---

---

---

---

---

---

#### What are the drawbacks of this scenario?

---

---

---

---

---

---

---

#### ***IF*** the school district were to move forward with this scenario, what would you like them to consider?

---

---

---

---

---

---

---

## Guiding our Future

Designing a strong learning community - together

### Realignment: BES K-8 and BRHS 9-12

Add Beaverlodge Grade 7 and 8 students to BES  
Add Beaverlodge Grade 9 students to BRHS  
HRS remains K-9

#### What would change with this approach?

BES becomes K-8  
BRHS becomes 9-12, with  
Beaverlodge Grade 9s zoned to  
attend BRHS instead of HRS.

#### What would stay the same with this approach?

HRS remains K-9

#### Considerations and Trade-Offs

- BES utilization may leave considerably less room for growth in the long term.
- This option would alleviate parent concerns for Grade 8 students attending BRHS.
- Would be an optimal choice if the Board was considering a K-8 replacement school in Beaverlodge; however, it may be several years before such a request would be approved. This would, however, allow for additional or replacement modular requests dependent on growth.
- This option may lead to declining student numbers at HRS and fewer program options for students at both BES and HRS.

#### Projected Enrollment and Utilization under this scenario

- Adding Grades 7 and 8 to BES would create a projected enrollment of 324 students with 76% utilization.
- Adding Beaverlodge Grade 9 students to BRHS would create a projected enrollment of 387 with 68% utilization.
- Beaverlodge junior high students remaining in Beaverlodge would create a projected enrollment of 258.5 students and 43% utilization at HRS.

[www.pwpsd.ca](http://www.pwpsd.ca)



#### What are the benefits of this scenario?

---

---

---

---

---

---

---

---

#### What are the drawbacks of this scenario?

---

---

---

---

---

---

---

---

#### ***IF*** the school district were to move forward with this scenario, what would you like them to consider?

---

---

---

---

---

---

---

---

## Guiding our Future

Designing a strong learning community - together

**Leave school configuration as is**

**No changes to school configurations  
or possible teaching assignments.**

### Considerations and Trade-Offs

- No changes in transportation grants.
- Continued student enrollment declines in Beaverlodge remain a possibility.
- Teaching staff at BES has been reduced from 19 full-time positions in 2018 to 15.55 in 2021 (a reduction of 3.45).
- This has led to some combined classes in elementary in non-core classes.

**What are the benefits of this scenario?**

---

---

---

---

---

---

---

**What are the drawbacks of this scenario?**

---

---

---

---

---

---

---

***If* the school district were to move forward with this scenario, what would you like them to consider?**

---

---

---

---

---

---

---

## Backgrounder

The backgrounder document will begin on the next page.



**PEACE WAPITI**  
**PUBLIC SCHOOL DIVISION**

Educating Today for Success Tomorrow

# GUIDING OUR FUTURE

DESIGNING A STRONG LEARNING  
COMMUNITY - **TOGETHER**

Exploring Junior High Programming  
in Beaverlodge and Hythe

**Thank you for joining the  
conversation about junior high  
programming  
in Beaverlodge and Hythe.**

We're looking for your input as we  
design a sustainable learning  
environment for all students,  
together.

**OUR CHILDREN, OUR FUTURE. LET'S MAKE DECISIONS TOGETHER.**



---

## What is this project about?

In 2020, the Peace Wapiti Public School Division (PWPSD) Board of Trustees received a request from the Beaverlodge Elementary School Council to create a junior high program (Grades 7-9) in the community of Beaverlodge, which would require a new and different configuration of schools. As a result, PWPSD has asked Administration to gather information to help make an informed decision on this matter.

In order to fully understand the impact of adding a junior high program in this community, the Division is assessing the current programming in three schools:

- Beaverlodge Elementary School (BES)
- Beaverlodge Regional High School (BRHS)
- Hythe Regional School (HRS)

As part of the engagement process, we will hear from parents, staff and students from the communities of Horse Lake First Nation, Beaverlodge and Hythe.

## Why this conversation and why now?

PWPSD is working with a public engagement consulting firm (Dialogue Partners) to host a series of conversations and activities with staff, students, parents and interested community members to understand and identify:

- What's working well in the current school configuration?
- What are the challenges and opportunities for change?
- As we move forward to determining how best to design junior high programming in the area, what would you like us to consider?



---

## How do you provide your hopes, thoughts and experiences?

Guiding Our Future is a project and conversation about working together to map out a sustainable path forward for junior high programming in the communities of Beaverlodge and Hythe. The intention is that this collectively identified path reflects the needs, values and perspectives of all community members in these communities.

To support a constructive and effective discussion, we have identified three possible approaches for you and others to review (see page 6). Each approach to school programming has a variety of implications, opportunities and challenges and we want you to consider each approach and share with us your understanding of the pros, cons and trade-offs for each possible path forward.

We want to hear from as many diverse perspectives as possible; students, teachers, parents, school staff, community members, business owners, social agencies, municipal staff and officials among many, many others.

Engage with us online  
via our survey or  
brainstorming tool



Jan 24 - Feb 24, 2023

**Online Survey**

<https://bit.ly/pwpsdsurvey>

**All our Ideas Tool**

[www.allourideas.org/pwpsd](http://www.allourideas.org/pwpsd)

*Important! This includes a never-ending stream of idea combinations. Please spend as much or as little time on this tool as you like.*



Engage with us in-person  
Attend a Community  
Conversation

Beaverlodge Elementary  
School  
Tuesday, Feb 14, 2023  
6:30-8:00PM

Hythe Regional School  
Wednesday, Feb 15, 2023  
6:30-8:00PM

Horse Lake Arena  
Thursday, February 16, 2023  
1:00-3:00pm (drop-in)

All the input and feedback will be collected, analyzed and shared with Administration, the Board of Trustees and all participants prior to the end of the 2022-2023 school year. Any corresponding change in school configuration requires review and approval by the Board of Trustees and subsequent implementation. Depending on the magnitude or scale of change this process may take significant time to complete.

---

## What does the school configuration look like today?

Guiding Our Future is a project and conversation about working together to map out a sustainable path forward for junior high programming in the communities of Beaverlodge and Hythe. The intention is that this collectively identified path reflects the needs, values and perspectives of all community members in these communities.

To support a constructive and effective discussion, we have identified three possible approaches for you and others to review (see page 5). Each approach to school programming has a variety of implications, opportunities and challenges and we want you to consider each approach and share with us your understanding of the pros, cons and trade-offs for each possible path forward.

We want to hear from as many diverse perspectives as possible; students, teachers, parents, school staff, community members, business owners, social agencies, municipal staff and officials among many, many others.

### Current School Utilization Rates

SCHOOL	ENROLLMENT [SEPT 29, 2022]	UTILIZATION
BES	244	59%
BRHS	347	61%
HRS	378.5	61%

### Historical and Future School Enrollment Estimates

SCHOOL	17-18	18-19	19-20	20-21	21-22	22-23	23-24
BES	328	318.5	296	252.5	246.5	<b>244</b>	240
BRHS	328	352	327	324	322	<b>347</b>	350
HRS	378	393	375	354	373	<b>378.5</b>	375

---

## What could possible changes look like?

This is a question for all students, parents, staff and community members who want to see opportunities and change that help all students realize their full potential. We believe PWPSD is an integral part of making students and the communities of Beaverlodge and Hythe successful into the future.

The potential enrollment and utilization for each of the scenarios we are considering is estimated and shown below. Additional detail about what each scenario would involve is included on the following pages.

SCHOOL	SCENARIO 1 BES K-7 BRHS 8-12 HRS K-9		SCENARIO 2 BES K-8 BRHS 9-12 HRS K-9		SCENARIO 3 - <i>CURRENT</i> BES K-6 BRHS 10-12 HRS K-9	
	<i>Enrollment</i>	<i>Utilization</i>	<i>Enrollment</i>	<i>Utilization</i>	<i>Enrollment</i>	<i>Utilization</i>
BES	284	67%	324	76%	244	59%
BRHS	427	74%	387	68%	347	61%
HRS	258.5	43%	258.5	43%	378.5	61%



---

# Potential Options for Junior High Programming

A more detailed description of each scenario is provided on pages 7-10.

As you review each of the scenarios under consideration, we invite you to reflect on the following questions:

- What are the pros and benefits of each scenario?
- What are the cons and drawbacks of each scenario?
- What trade-offs should we expect with each scenario?
- If we were to make changes to the programming in these schools, how would those changes impact you? Others in your community?
- What else would you like us to consider as we create a plan for junior high programming in Beaverlodge and Hythe?

## SCENARIO 1

Realignment: BES K-7 and BRHS 8-12, HRS remains K-9

- Add Beaverlodge Grade 7 students to BES
- Add Beaverlodge Grade 8 and 9 students to BRHS
- HRS remains K-9

## SCENARIO 2

Realignment: BES K-8 and BRHS 9-12, HRS remains K-9

- Add Beaverlodge Grade 7 and 8 students to BES
- Add Beaverlodge Grade 9 students to BRHS
- HRS remains K-9

## SCENARIO 3

Leave school configuration as is

- No changes to school configurations or possible teaching assignments.

## SCENARIO 4

Open to alternatives

Is there another way to think about the future? Are there ideas we haven't mentioned? Tell us what the future might look like to you.



## SCENARIO 1

### Realignment: BES K-7 and BRHS 8-12

Add Beaverlodge Grade 7 students to BES

Add Beaverlodge Grade 8 and 9 students to BRHS

HRS remains K-9

What would change with this approach?

BES becomes K-7

BRHS becomes 8-12, with Beaverlodge grades 8 and 9 zoned to attend BRHS instead of HRS.

What would stay the same with this approach?

HRS remains K-9

#### Considerations and Trade-Offs

- Some parents may not like Grade 8 students attending BRHS.
- This option allows for growth in the community of Beaverlodge at both school sites

#### Projected Enrollment and Utilization under this scenario

- Adding Grade 7 to BES would create a projected enrollment of 284 students with 67% utilization.
- Adding Beaverlodge Grade 8 and 9 students to BRHS would create a projected enrollment of 427 with 74% utilization.
- Beaverlodge junior high students remaining in Beaverlodge would create a projected enrollment of 258.5 students and 43% utilization at HRS.

For people who would find value in this approach for the future, what might they say about how it would work?

"It would be great to see programming enhancements at BES like Junior High CTF classes in the building."

"The benefit I see in this scenario is students in Beaverlodge would have fewer transitions. Research shows this has a positive effect on achievement and graduation rates."

"BES would cease to be a CSW\* school. BES and BRHS students would have their day shortened by 10 mins!"

\* Compressed School Week

## SCENARIO 2

### Realignment: BES K-8 and BRHS 9-12

Add Beaverlodge Grade 7 and 8 students to BES

Add Beaverlodge Grade 9 students to BRHS

HRS remains K-9

What would change  
with this approach?

BES becomes K-8

BRHS becomes 9-12, with

Beaverlodge Grade 9s zoned to  
attend BRHS instead of HRS.

What would stay the same  
with this approach?

HRS remains K-9

#### Considerations and Trade-Offs

- BES utilization may leave considerably less room for growth in the long term.
- This option would alleviate parent concerns for Grade 8 students attending BRHS.
- Would be an optimal choice if the Board was considering a K-8 replacement school in Beaverlodge; however, it may be several years before such a request would be approved. This would, however, allow for additional or replacement modular requests dependent on growth.

#### Projected Enrollment and Utilization under this scenario

- Adding Grades 7 and 8 to BES would create a projected enrollment of 324 students with 76% utilization.
- Adding Beaverlodge Grade 9 students to BRHS would create a projected enrollment of 387 with 68% utilization.
- Beaverlodge junior high students remaining in Beaverlodge would create a projected enrollment of 258.5 students and 43% utilization at HRS.

For people who would  
find value in this  
approach for the future,  
what might they say  
about how it would  
work?

"I would find value in the smaller junior high numbers at each school. This could increase participation and create more inclusion with smaller groups."

"Beaverlodge junior high students may find participating in extra-curricular easier due to transportation challenges that may arise with after school pick up in Hythe."

## SCENARIO 3

### Leave school configuration as is

No changes to school configurations or possible teaching assignments.

#### Considerations and Trade-Offs

- No changes in transportation grants.
- Continued student enrollment declines in Beaverlodge remain a possibility.
- Teaching staff at BES has been reduced from 19 full-time positions in 2018 to 15.55 in 2021 (a reduction of 3.45).
- This has led to some combined classes in elementary in non-core classes.

For people who would find value in this approach for the future, what might they say about how it would work?

"This scenario works for me because BES is already an older, smaller school. I would like to keep the student numbers low."

"I don't love the idea of my child in Grade 8 being in the same school with high schoolers."

I would like to keep things as they are."

"Hythe Regional School offers a rich and diverse program in Junior High."

## SCENARIO 4

Is there another way to think about the future?

Are there ideas we haven't mentioned?

Visit [www.pwpsd.ca](http://www.pwpsd.ca) or check out the engagement opportunities on page 3 to tell us what that future might look like to you.





# GUIDING THE FUTURE



**Questions? Contact us:**

**[pwpsdengagement@pwpsd.ca](mailto:pwpsdengagement@pwpsd.ca)**

For more information visit our website at [www.pwpsd.ca](http://www.pwpsd.ca)